

WYTHALL TENNIS CLUB

Safeguarding Policy and Procedures



CONTENTS

POLICY STATEMENT AND SCOPE	2
POLICY PRINCIPLES	3
RESPONSIBILITY FOR SAFEGUARDING	3
POLICY AIMS	4
DEFINITIONS	4
RECRUITMENT	4
TRAINING	4
CODE OF CONDUCT	4
TRANSPORTATION	5
SUPERVISING CHILDREN	5
POSITIONS OF TRUST	5
TYPES OF ABUSE	6
LOW LEVEL CONCERNS	6
RESPONDING TO A SAFEGUARDING CONCERN OR ALLEGATION	7
RESPONDING TO A DISCLOSURE OF ABUSE	8
CONFIDENTIALITY	8
INFORMATION SHARING AND RETENTION	8
WHISTLEBLOWING	9
RELATED POLICIES AND PROCEDURES	9
APPENDIX A: REPORTING A SAFEGUARDING CONCERN THAT OCCURS WITHIN TENNIS	10
APPENDIX B: REPORTING A SAFEGUARDING CONCERN THAT HAPPENS OUTSIDE OF TENNIS	11

Policy Owner: *Mr Andrew Morton*

Policy approved by: *WTC Committee*

Date Policy approved: *30th November 2025*

Next review Date: *October 2027*



POLICY STATEMENT AND SCOPE

Wythall Tennis Club recognises our moral and statutory responsibility to safeguard and promote the welfare of all children (anyone under 18) and adults at risk. We are committed to ensuring our safeguarding practice reflects statutory responsibilities, government guidance and with LTA safeguarding standards, which can be found here:

<https://www.lta.org.uk/about-us/safeguarding/venue-standards/>

We are committed to prioritising the well-being of children and adults at risk and providing a safe and welcoming environment where they are respected and valued. We are alert to the signs of abuse and neglect and follow our procedures to ensure that children and adults at risk receive effective support and protection.

We recognise that health, well-being, ability, disability and need for care and support can affect a person's resilience. We recognise that some people experience barriers, for example, to communication in raising concerns or seeking help. We recognise that these factors can vary at different points in people's lives.



We recognise that there is a legal framework within 'sport' which needs to safeguard adults at risk. This legal framework needs to act in accordance with the relevant safeguarding adult legislation and with the local statutory safeguarding procedures.

Actions taken by us will be consistent with the principles of adult safeguarding ensuring that any action taken is prompt, proportionate and that it includes and respects the voice of the adult concerned.

This policy applies to any person who plays, coaches, officiates, works, volunteers, or otherwise participates (or visits) at our venue.

We expect contractors and partner organisations, including for example, suppliers and sponsors to adopt and demonstrate their commitment to the principles and practice as set out in this Policy and associated procedures.

All bound by this policy are responsible for upholding high standards of conduct and professionalism and raising safeguarding concerns and allegations in accordance with the Reporting a Safeguarding Concern Procedures.

	
Kevin Turner Chairperson	Andrew Morton Welfare Officer



POLICY PRINCIPLES

- The safety and welfare of children and adults at risk is paramount
- All children and adults at risk, regardless of age, disability, gender reassignment, race, religion or belief, sex, or sexual orientation have an equal right to protection from all types of harm or abuse
- Safeguarding is everybody's responsibility
- All safeguarding concerns or allegations will be taken seriously and responded to swiftly and appropriately
- We strive to create a culture and environment where everyone is empowered to protect themselves and others and feel able to raise concerns
- We actively promote working together to ensure all children and adults at risk are safeguarded

RESPONSIBILITY FOR SAFEGUARDING

The Committee have overall accountability for this policy and its implementation.

We have an appointed Welfare Officer (WO) who holds operational responsibility for safeguarding in line with the LTA role profile and is supported by the Committee. The WO is the first point of contact to raise a safeguarding concern involving a child or adult at risk. They also play a proactive role in increasing an awareness of safeguarding within our venue.

The Welfare Officer is:

Andrew Morton

- Contact number: 07860560503
- Email address: wtc.welfareofficer@gmail.com

If the Welfare Officer is not available to report a safeguarding concern or allegation to, the alternative contact within our venue is:

Grace Turner

- Contact number: 07804328656
- Email address: wtc.welfareofficer@gmail.com

The LTA Safeguarding Team has strategic and operational responsibility for safeguarding in tennis in Britain, including the monitoring and evaluation of safeguarding standards and investigating safeguarding concerns. Safeguarding concerns can be raised directly to the LTA Safeguarding Team via <https://safeguardingconcern.lta.org.uk/>

The Local Authority contact details are (Worcestershire):

- Children Services: 01905846221
- Adult Services: 01905843189

All bound by this policy are responsible for raising safeguarding concerns in accordance with the 'Reporting a safeguarding concern' procedure (see Appendix A and B).



POLICY AIMS

The purpose of this policy is to:

- Protect children (including children of adults who use our services) and adults at risk from harm
- Provide the necessary information to enable people to meet their safeguarding responsibilities
- Deliver good practice and high safeguarding standards
- Outline our commitment to safeguarding children and adults at risk

DEFINITIONS

Child: anyone under the age of 18.

Parent: birth parents and other adults who are in a parenting role.

Adult at risk under the England (Care Act 2014): an individual aged 18 years and over who:

- (a) has needs for care and support (whether or not the local authority is meeting any of those needs) and;
- (b) is experiencing, or at risk of, abuse or neglect and;
- (c) as a result of those care and support needs is unable to protect themselves from either the risk of, or the experience of abuse or neglect.

RECRUITMENT

We operate a Safe Recruitment Policy and are committed to ensuring that people who work (including volunteers and self-employed individuals who we engage) with children or adults at risk are appropriately qualified for that role. This means that, where necessary, they will be required to undergo Criminal Records Checks through the Disclosure and Barring Service (DBS) in England and Wales, the Protection Vulnerable Groups (PVG) Scheme for those in Scotland, or the equivalent Overseas Criminal Records Check in their country of origin before being allowed to work.

TRAINING

All LTA Accredited Coaches and Welfare Officers complete safeguarding training as part of their role and renew this as part of their Accreditation requirements or every three years. The Committee also receive safeguarding training (every three years or when there are changes to the Committee) provided to them via the Welfare Officer to enable them to recognise the possible signs and indicators of abuse and what to do if they have a safeguarding concern or allegation.

An induction, which includes our safeguarding policies and procedures, reporting and recording arrangements, and details for the Welfare Officer, is also provided to all new staff, volunteers, coaches and any self-employed individuals who we engage.

CODE OF CONDUCT

All individuals within scope of this policy are expected to familiarise themselves with this policy and the LTA Code of Conduct (available here: <https://www.lta.org.uk/about-us/what-we-do/governance-and-structure/rules-regulations/>), and at all times act in accordance with them. Breaches of the law,



this Policy and/or the LTA Code of Conduct may result in criminal and/or disciplinary action being taken.

TRANSPORTATION

It is the responsibility of parents to ensure appropriate transport arrangements are in place for their children when travelling to and from the venue. Similarly, it is the responsibility of the adult at risk (or their carer) to ensure transport arrangements are in place.

Coaches and other staff/volunteers are not responsible for transporting children or adults at risk to and from the venue or other locations (except if it is an emergency), unless it is as part of a venue organised trip in which case the following measures will be in place:

- The adult at risk or child's parents are informed of the destination, reason for the journey and who the driver will be and have given their verbal consent.
- In the case of junior tournaments or similar events, the adult at risk or child's parents return a completed consent form and the driver will have a copy of this and emergency contact details during the journey.
- Where possible, there will be two adults in the front of the car, irrespective of the number of children or adults at risk being transported.
- Children or adults at risk are always seated in the back of the vehicle
- The driver is responsible for ensuring appropriate arrangements and that the child's parents are aware of them

SUPERVISING CHILDREN

Children under the age of 13 are required to have parental supervision whilst at our venue and not participating in any venue sessions, such as coaching lessons or tennis camps.

For coaching activities, we comply with the LTA guidance on coach-to-player ratios. For children aged under 13, children must be delivered directly into the care of the coach by the parent and picked up directly from the coach. Please note that it is not enough to drop off outside or at the front door of the venue. Parents must ensure that their child has been delivered to the coach. Children under the stipulated age will not be allowed to leave a coaching session or camp unattended unless permission has been given in writing.

For other activities, e.g. away trips/matches, we will use the following adult-to-child ratios:

- 2:8 for children 10 and under
- 2:10 for children aged 11 and over

We may decide to have a greater adult-to-child ratio dependent on the needs of the children or identified risks. At least one of the supervising adults will, where possible, be the same gender as the children.

POSITIONS OF TRUST

A person aged 18 or older who holds a position of authority or responsibility over a child or adult at risk is in a position of trust. Positions of trust are not defined by a qualification or job title, but by reference to the activity which the adult is carrying out in relation to the child or adult at risk, namely,



coaching, teaching, training, supervising or instructing (including as a volunteer) on a regular basis. People who are in a position of trust must be aware of the power imbalance they hold over children and adults at risk and not use this for personal advantage or gratification.

In June 2022, the Sexual Offences Act 2003 was changed to extend the abuse of position of trust offences to include where an adult is coaching, teaching, training, supervising or instructing a child under 18 years old within sport or religious settings. This means that under the Sexual Offences Act 2003, in England and Wales it is a criminal offence for a person in a position of trust to have a sexual or intimate relationship with a child under 18 years old, even if the relationship is deemed consensual. Therefore, any sexual activity (including online activity) between someone in a position of trust and a child under 18 years old will be formally reported as it may be a criminal offence.

TYPES OF ABUSE

There are four main types of abuse that apply to children, these being:

- Sexual
- Physical
- Emotional
- Neglect

The safeguarding adults at risk legislation in England defines categories of adult abuse and harm as:

- Physical
- Sexual
- Emotional/Psychological/Mental
- Neglect
- Financial or material abuse
- Discriminatory
- Organisational
- Self-neglect
- Domestic Abuse (including coercive control)
- Modern slavery

Detailed descriptions of these types of abuse, along with other forms of harm, can be found in the Definitions section of our Supplementary Safeguarding Information Document.

LOW LEVEL CONCERNS

A low level concern (which can also be known as poor practice) is behaviour that falls short of abuse towards a child and does not meet the allegation threshold or a referral to the Local Authority Designated Officer (LADO, England and Wales only), but which nevertheless harms or places a child at risk of harm or has a negative effect on the safety and well-being of children.

An 'allegation' means that it is alleged that a person who works with children has:

- Behaved in a way that has harmed a child or may have harmed a child
- Possibly committed a criminal offence against a child



- Behaved towards a child or children in a way that indicates they may pose a risk of harm to children
- Have behaved in a way in their personal life that raises safeguarding concerns. These concerns do not have to directly relate to a child but could, for example, include an arrest for possession of a weapon
- Have, as a parent or carer, become subject to child protection procedures

A low level concern is any concern - no matter how small, and even if no more than a 'nagging doubt' - that an adult may have acted in a manner which:

- Is not consistent with the Code of Conduct, and/or
- Relates to their conduct outside of work which, even if not linked to a particular act or omission, has caused a sense of unease about that adult's suitability to work with children

Low level concerns are not acceptable and should be reported to the Venue Welfare Officer who will refer the matter on to the LTA Safeguarding Team. It is critical that all low level concerns are referred to the LTA. Having one recipient of all such concerns should allow any potential patterns of concerning, problematic or inappropriate behaviour to be identified, and ensure that no information is potentially lost.

Upon receipt by the LTA, low level concerns will be triaged and managed through the LTA Safeguarding Regulations, which form part of the LTA Disciplinary Code available here: <https://www.lta.org.uk/about-us/what-we-do/governance-and-structure/rules-regulations/>.

The LTA may decide that the low level concern is suitable to be dealt with by the venue directly, in which case the LTA will support them with managing the situation. If further information comes to light which raises the level of concern, the matter must be referred to the LTA.

RESPONDING TO A SAFEGUARDING CONCERN OR ALLEGATION

Everyone has a responsibility to ensure the safety and welfare of children and adults at risk and to take appropriate steps to ensure that safeguarding concerns and allegations are taken seriously and responded to quickly and appropriately, even if the safeguarding concern or allegation may not have occurred recently.

It is advisable to discuss safeguarding concerns or allegations with the adult at risk, or the child's parents in the first instance except where this may place the adult at risk, a child, or someone else, at increased risk.

It is not the responsibility of anyone within Wythall Tennis Club to investigate any safeguarding concern or allegation, nor determine whether abuse has taken place. All concerns must be responded to in accordance with the Reporting a Safeguarding Concern Procedure.

Once a safeguarding concern or allegation is reported to our Welfare Officer, it will be passed onto the LTA Safeguarding Team who will triage and manage it through the LTA Safeguarding Regulations, which form part of the LTA Disciplinary Code available here: <https://www.lta.org.uk/about-us/what-we-do/governance-and-structure/rules-regulations/>.



RESPONDING TO A DISCLOSURE OF ABUSE

If a child or adult at risk discloses that he or she has been abused or is at risk of abuse:

- Listen carefully and calmly to what is said
- Reassure them that they have done the right thing and what they have told you is very important
- Keep questions to a minimum, only ask questions if you need to identify/ clarify what the person is telling you
- Ask them what they would like to happen next
- Explain what you would like to do next
- Ask for their consent for the information to be shared (adults only)
- Let them know that you will need to speak to the Welfare Officer/LTA Safeguarding Team because it is in their best interest. If you intend to speak to the police or social care, you should let them know this too.
- Do not seek to investigate it yourself or let doubt/personal bias prevent you from reporting the allegation
- Make an arrangement as to how you can contact them safely (adults only)
- Help them to contact other organisations for advice and support (e.g. Police, Domestic Abuse helpline, Victim Support, etc)
- Ensure that their immediate needs are met and that the priority is their safety and protection from further risk of harm
- Record details of the disclosure as soon as possible (but not during the disclosure) and then submit the details to the LTA via <https://safeguardingconcern.lta.org.uk/>

CONFIDENTIALITY

All safeguarding concerns and allegations will be dealt with confidentiality by the Welfare Officer on a need to know basis, not only to maintain the privacy of the individuals involved but also to ensure that evidence or any investigation is not compromised. All people involved in a safeguarding concern or allegation should similarly ensure they maintain high levels of confidentiality.

There may be circumstances where an individual raising a safeguarding concern or allegation does not wish to be named. It is not possible to assure anonymity, as in some circumstances individuals will need to be named (for example, where it is necessary in order to carry out a fair disciplinary process).

INFORMATION SHARING AND RETENTION

We share safeguarding information with the LTA in accordance with this policy and LTA regulations. In certain situations, we may be required to also share information with statutory agencies and other relevant organisations where it is considered necessary and proportionate to prevent or manage the risk of harm in tennis or sport to children.

When sharing safeguarding information, we will keep a dated record of:

- what has been shared;
- with whom; and
- for what purpose.



This should include, where applicable, a record of any steps taken to secure, protect or minimise personal data, any express limitations placed on the onward use of the information, and a record of the basis for sharing.

Where safeguarding information is concerned, we operate in line with best practice which is for long term (e.g. lifetime) retention of relevant documentation. The location and security of information will be agreed by the Welfare Officer at the time and passed on as appropriate when personnel change.

WHISTLEBLOWING

Whistleblowing is when someone reports wrongdoing on the basis that it is in the public interest for the wrongdoing to be brought to light. This can include:

- your or another organisation doesn't have clear safeguarding procedures to follow
- concerns aren't dealt with properly or may be covered up
- a concern that was raised hasn't been acted upon
- you are worried that repercussions are likely to arise if you raise a concern.

This applies to incidents that happened in the past, are happening now, or may happen in the future.

Whistleblowers should contact the Welfare Officer in the first instance. If the whistleblower does not wish to speak to someone within the venue or the LTA Safeguarding Team, the NSPCC Whistleblowing advice line can be contacted on 0800 028 0285 or by emailing help@nspcc.org.uk.

Safecall is an independent, confidential and, if required, anonymous reporting service provided by the LTA if there are serious concerns regarding any of the public interest areas below:

- Criminal offences, including fraud
- Failure to comply with a legal obligation
- Legal miscarriage of justice
- Endangering someone's health and safety
- Damage to the environment
- Covering up wrongdoing in any of the above categories

If a Whistleblower feels that it is not appropriate to contact the LTA Safeguarding Team on the grounds of one of the above areas, they can contact Safecall via telephone on 0800 915 1571. Calls are not recorded. Alternatively, a report can be made online: www.safecall.co.uk/report

RELATED POLICIES AND PROCEDURES

This policy should be read alongside our other policies and procedures.



APPENDIX A: REPORTING A SAFEGUARDING CONCERN THAT OCCURS WITHIN TENNIS

Contacts

LTA Lead Safeguarding Officer: David Humphrey
(contactable via online concern form)

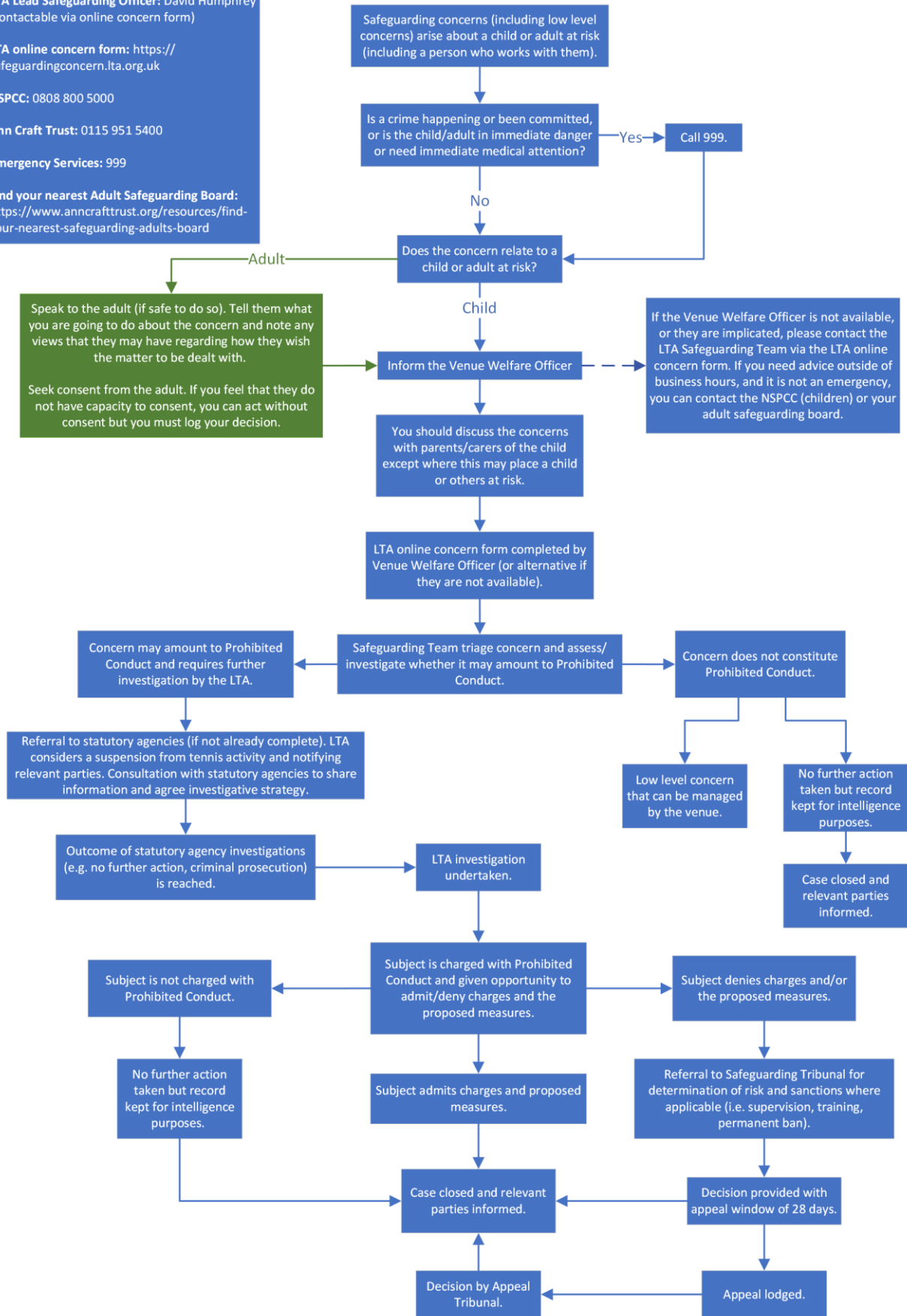
LTA online concern form: <https://safeguardingconcern.lta.org.uk>

NSPCC: 0808 800 5000

Ann Craft Trust: 0115 951 5400

Emergency Services: 999

Find your nearest Adult Safeguarding Board:
<https://www.anncrafttrust.org/resources/find-your-nearest-safeguarding-adults-board>



APPENDIX B: REPORTING A SAFEGUARDING CONCERN THAT HAPPENS OUTSIDE OF TENNIS

Contacts

LTA Lead Safeguarding Officer: David Humphrey
(contactable via online concern form)

LTA online concern form: <https://safeguardingconcern.lta.org.uk>

NSPCC: 0808 800 5000

Ann Craft Trust: 0115 951 5400

Emergency Services: 999

Find your nearest Adult Safeguarding Board:
<https://www.anncrafttrust.org/resources/find-your-nearest-safeguarding-adults-board>

